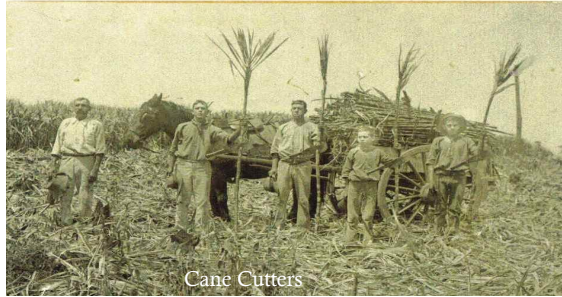


# NOT JUST THE SUGAR INDUSTRY

The Mount Bauple & Historical Society INC represents the Tiaro District. We have history dating back to the first settlement by John Eaton who took up the lease to Tiaro station in 1853. Bauple was first settled by Charles Augustus Stringer in 1869. So many named people took up residence in the years to follow.



And in 2003 we created our own starts. Lillian Coyne became Citizen of the Year. In the photo Minister for Agriculture Warren Truss & Mayor John Horrex presents Lillian with her plaque. Another stalwart who was in hiding, is her husband Joe.



An incredible group of volunteers continue to maintain the Museum, record new incoming material and research the past. You can today research our records on computer. Soon a CD copy becomes available to those who so want, books produced so far are "BAUPLE Looking Back To Pioneering Times" & "TINNANBAR As I Known IT", both by Lillian Coyne.

**MOUNT BAUPLE & DISTRICT HISTORICAL SOCIETY INC.**  
 BAUPLE DRIVE BAUPLE P O BOX 3, BAUPLE QLD, 4650  
 PHONE (07) 41939341  
 E-mail: [info@bauplemuseum.com](mailto:info@bauplemuseum.com) Web: [www.bauplemuseum.com](http://www.bauplemuseum.com)

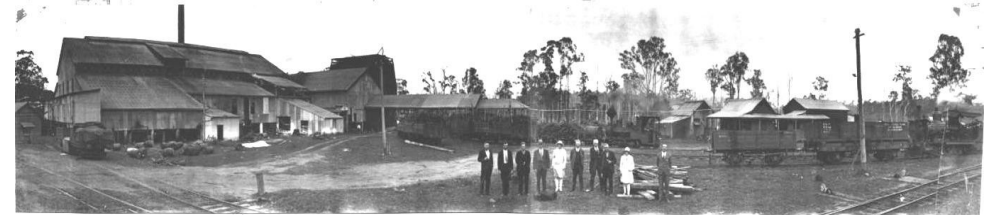


**MOUNT BAUPLE & DISTRICT HISTORICAL SOCIETY INC.**  
 BAUPLE DRIVE BAUPLE  
 Phone (07) 4193 9341  
 E-mail [BaupleMuseum@bigpond.com](mailto:BaupleMuseum@bigpond.com)  
 P O BOX 3, BAUPLE QLD. 4650

MEMBER OF MUSEUMS AUSTRALIA Inc. No 1A19994 ABN 46057206983

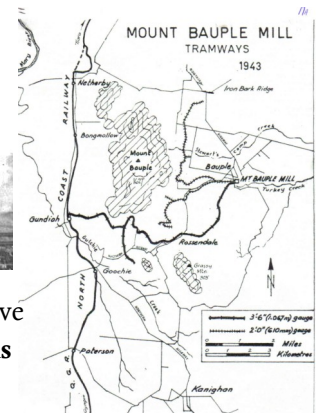
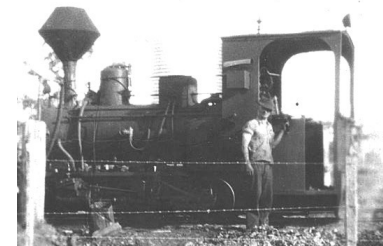
OPEN MON TO SUN 10AM—3PM ADMISSION BY GOLD COIN DONATION

# The Early Bauple Sugar Industry



Bauple Mill commenced crushing in 1896 and operated until 1951. During most of this period it was the largest mill in the Maryborough region.

**The Mount Bauple** Museum has embarked on a creative project to document, preserve and present the early history of this Industry. The locomotive restoration is just the start. The original KRAUSS locomotive **The Mount Bauple & Historical Society INC.** Maintains the Museum and has an active research group.

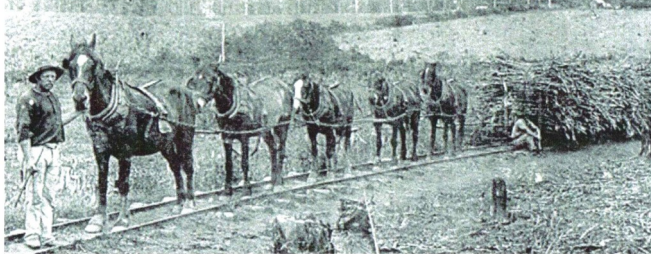


In 1893, 24 years after first settlement in the area, a Committee (Messrs Negus, MacKellar, Biddles, Proctor & Hunt), was formed to assess land available for sugar cane production. By 1894 support was received from the Government and a contract let to John Walker & Co for a sugar mill, Production commenced in 1896 when 10481 tonnes of cane was crushed. Production doubled in the first 5 years but after a severe drought in 1902 (nil cane crushed), losses were sufficient that the Government took control.



*Captain Alexander MacKellar*

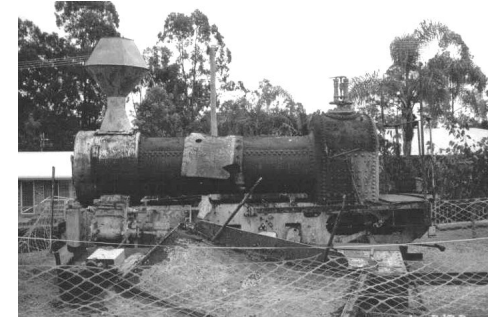
**John Herbener** Cane being hauled along the tram lines prior to the purchase of the Krauss Loco



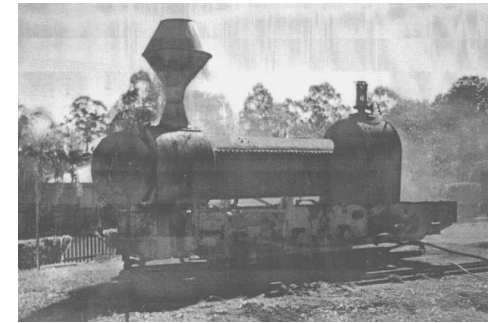
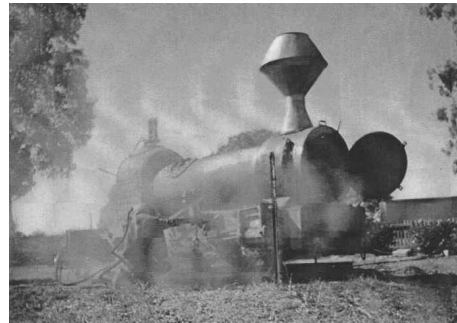
The Bauple mill was large compared to the Marybough factory, but it never reached its full potential. In 1925 the Government handed it over to a grower controlled cooperative. Some good years followed and

the highest crushing in a year was achieved in 1938 (51388 Tones crushed). Hard times again fell during the war years, due to material and labour shortages, and in 1951 it was decided to close the mill. Bauple Mill was considered built, in the wrong place and at the wrong time

Locomotive 30 "Bauple" in 1901



The Locomotive restoration started with a 1907 fowler from Isis Mill (via a period on display in Maryborough). It was stripped, sandblaster and primed coated before rebuilding commenced. A new cabin has been built and further restoration begun.



Transformation currently taking place on site at the Mount Bauple Museum.



The original Loco was a 1912 German Krauss. It operated up to mill closure in 1951. It was sold and moved to Sydney. Now heavily stripped, it sits in a paddock near Goulburn NSW. The full history of this loco is in a publication on the bauple Sugar Industry, currently being compiled.

